

Windward Community College

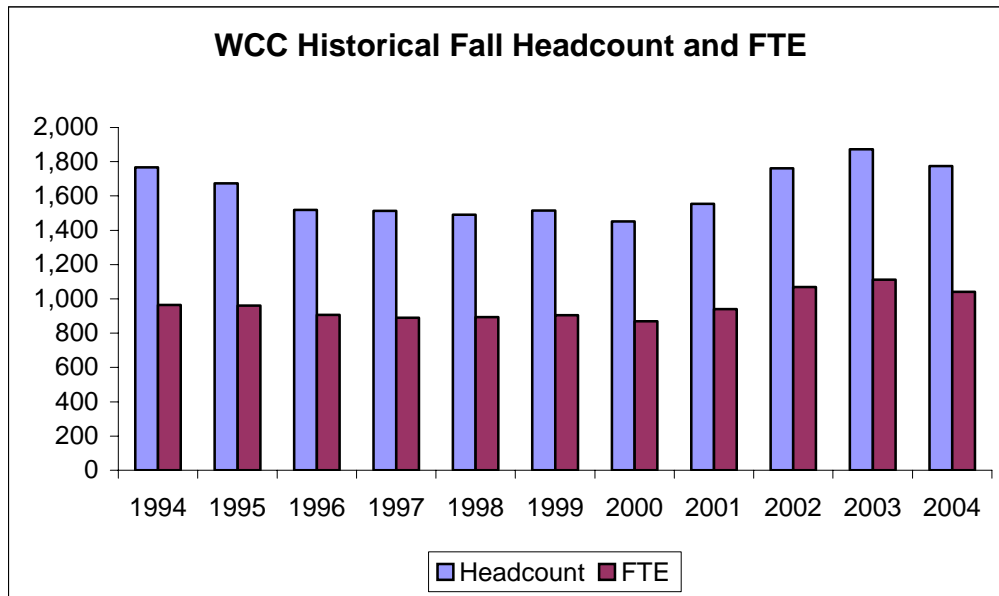
Self Study Demographic Information and Achievement Data



August 15, 2005

STUDENT ENROLLMENT

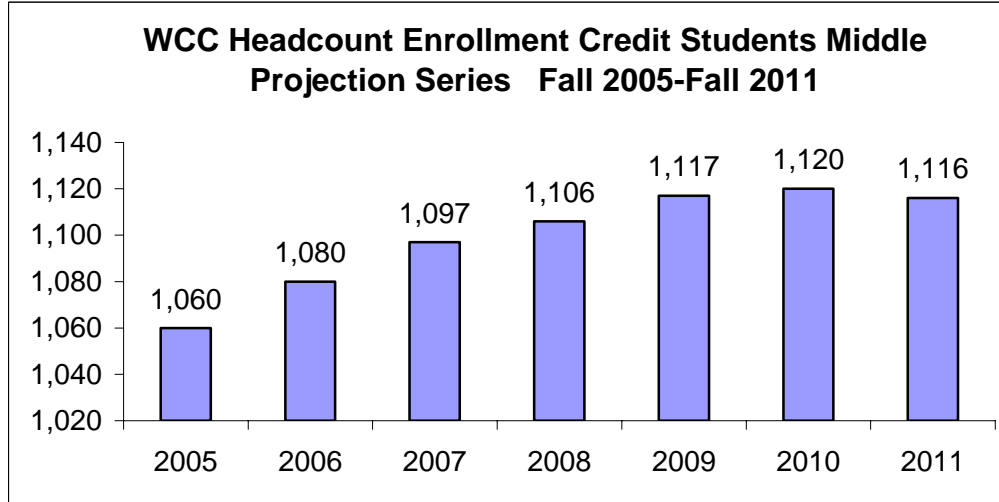
Figure 1. Historical Fall Headcount and Full-Time Equivalent (FTE) Enrollment for Windward Community College, 1994-2004.



Source: MAPS Fall Enrollment Report, University of Hawaii, Community Colleges Fall 2004, Table 1, Table 2.

ENROLLMENT PROJECTIONS

Figure 2. Enrollment Projections for Windward Community College, 2005-2011.



Source: MAPS Enrollment Projections University of Hawaii Community Colleges Fall 2005 To Fall 2011, Table 4, Middle Projection Series.

GOING RATE

Going Rate – Hawaii public and private high school June graduates who enroll in a community college the following fall semester

Figure 3: Going Rate High School Graduates (percentage)

(Data to be inserted here)

Figure 4: Going Rate High School Graduates (number)

(Data to be inserted here)

ENROLLMENT BY RESIDENCY FOR TUITION STATUS

**Table 1. Enrollment by Residency for Windward Community College Tuition Status,
Fall 2000 to Fall 2004.**

	Fall 2000		Fall 2001		Fall 2002		Fall 2003		Fall 2004	
	No.	%	No.	%	No.	%	No.	%	No.	%
Resident	1,322	91.1	1,388	89.3	1,584	89.9	1,701	90.8	1,610	90.7
Resident Converted	15	1.0	18	1.2	14	0.8	19	1.0%	12	0.7
Residents Subtotal	1,377	92.1	1,406	90.5	1,598	90.7	1,720	91.8	1,622	91.4
Not Exempted	26	1.8	29	1.9	41	2.3	38	2.0	32	1.8
Military Exemption	71	4.9	95	6.1	97	5.5	87	4.6	79	4.5
Faculty/Staff Exemption	1	0.1	2	0.1	2	0.1			1	0.1
Institutional Exemption	5	0.3	4	0.3			2	0.1	3	0.2
Student Exchange										
Pacific-Asian Exemption					3	0.2				
East-West Center										
Ethnic Hawaiian Exemption	11	0.8	18	1.2	20	1.1	26	1.4	37	2.1
Non-Resident Subtotal	114	7.9	148	9.6	163	9.2	153	8.1	152	8.7
No Data									1	0.1
GRAND TOTAL	1,491	100%	1,554	100%	1,761	100%	1,873	100%	1,774	100%

Source: MAPS Fall Enrollment Report University of Hawaii Community Colleges, Appendix B7,
Selected Characteristics of Credit Students.

INTERNATIONAL STUDENT ENROLLMENT

The University's long-standing interest in International Education has attracted a wealth of academic expertise, resources, and linkages. The campuses of the University of Hawai'i system undertake a variety of international programs and projects, reflecting their commitment to developing institutional expertise in international education, with a particular focus on the Asia and Pacific region.

Table 2 : International Student Enrollment at Windward Community College, Fall 2004.

Region of Origin	International Enrollment
Eastern Asia	1
Middle East	1
Oceania	1
South America	2
Southeast Asia	1
Western Europe	3
No data	2
Total	11

Source: University of Hawaii, Institutional Research Office, August 2005.

ORGANIZATIONAL CHART

Figure 5. University Hawaii Community College Organizational Chart.

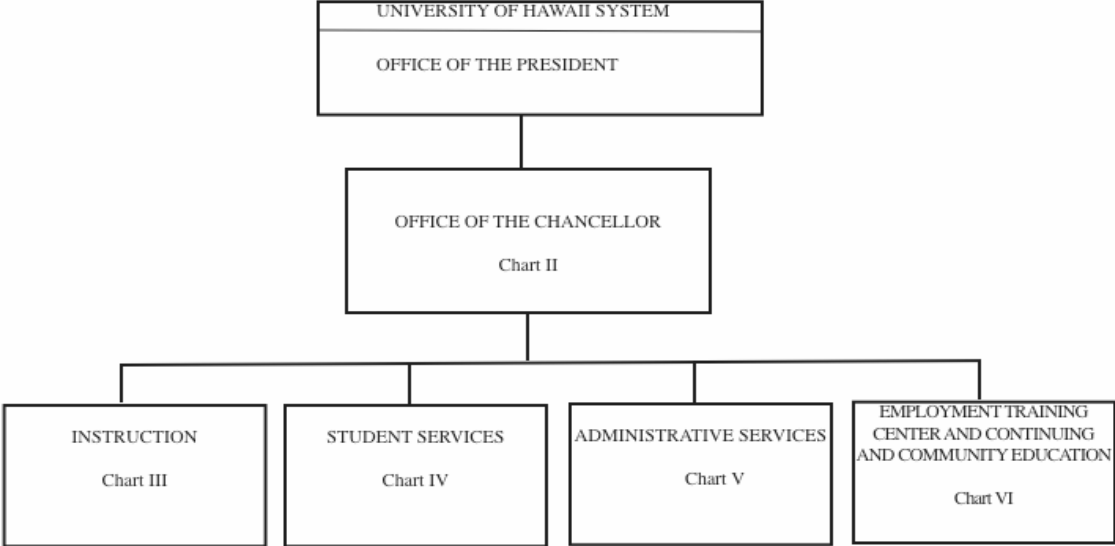


Chart II. Office of the Chancellor.

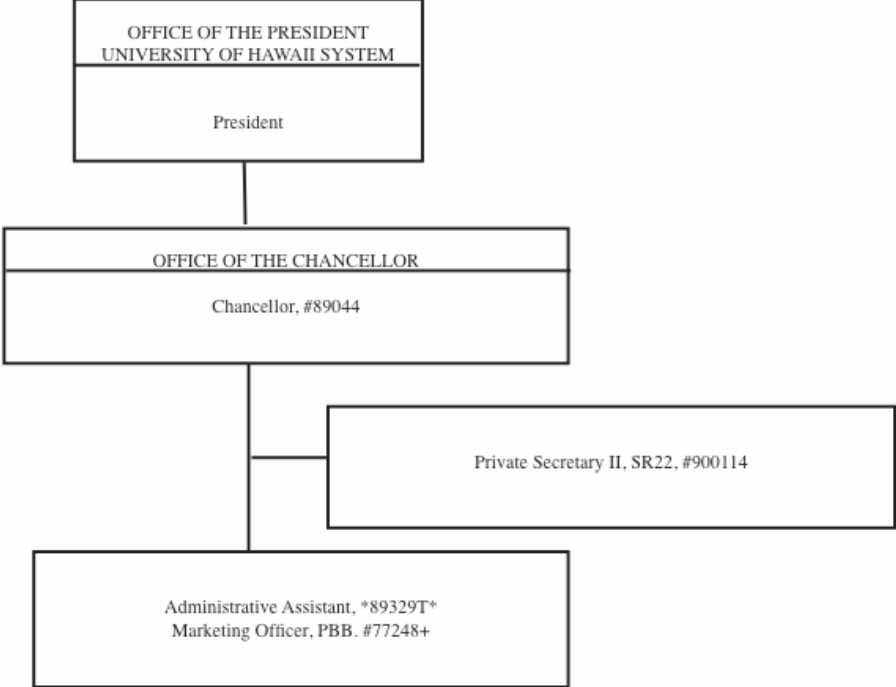


Chart III. Instruction.

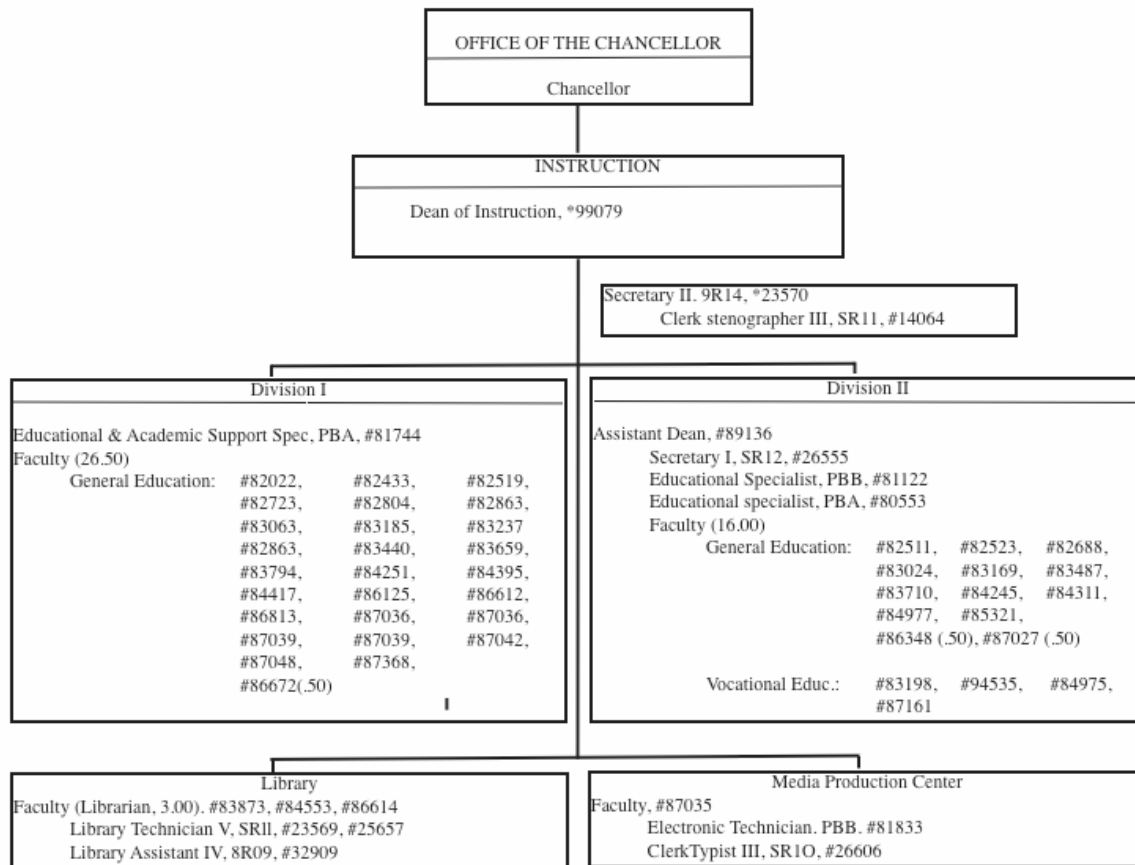


Chart IV. Student Services.

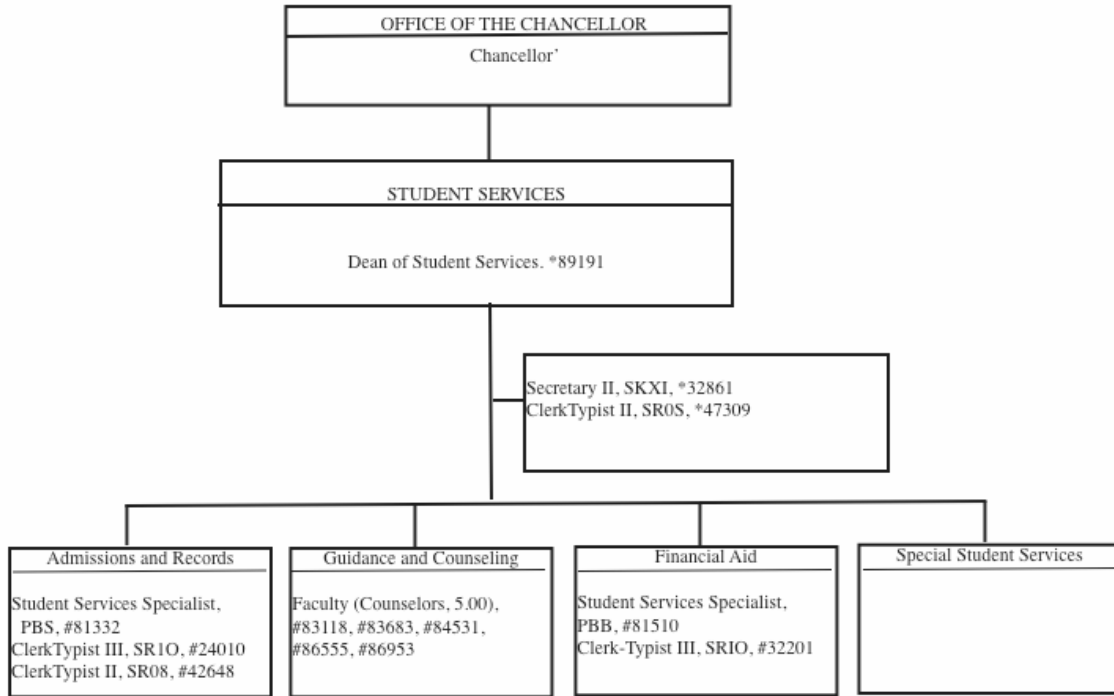


Chart V. Administrative Services.

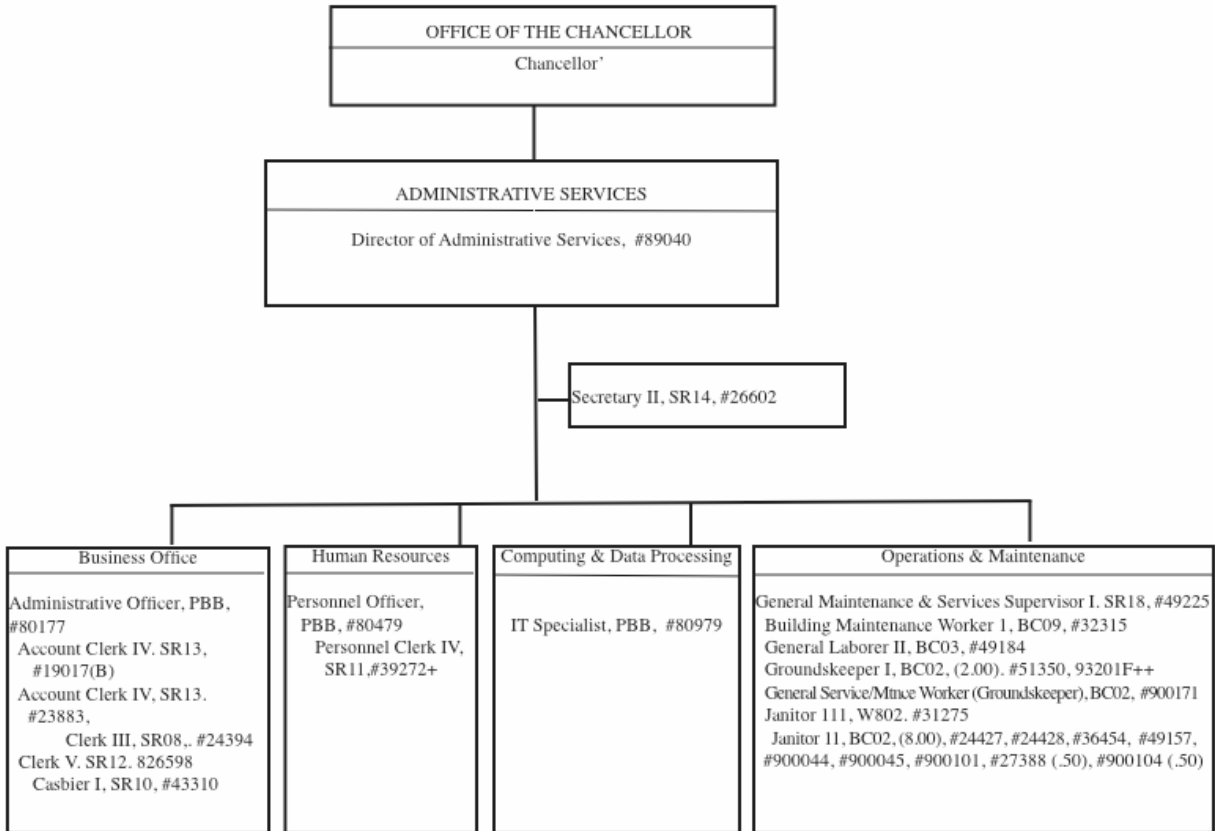
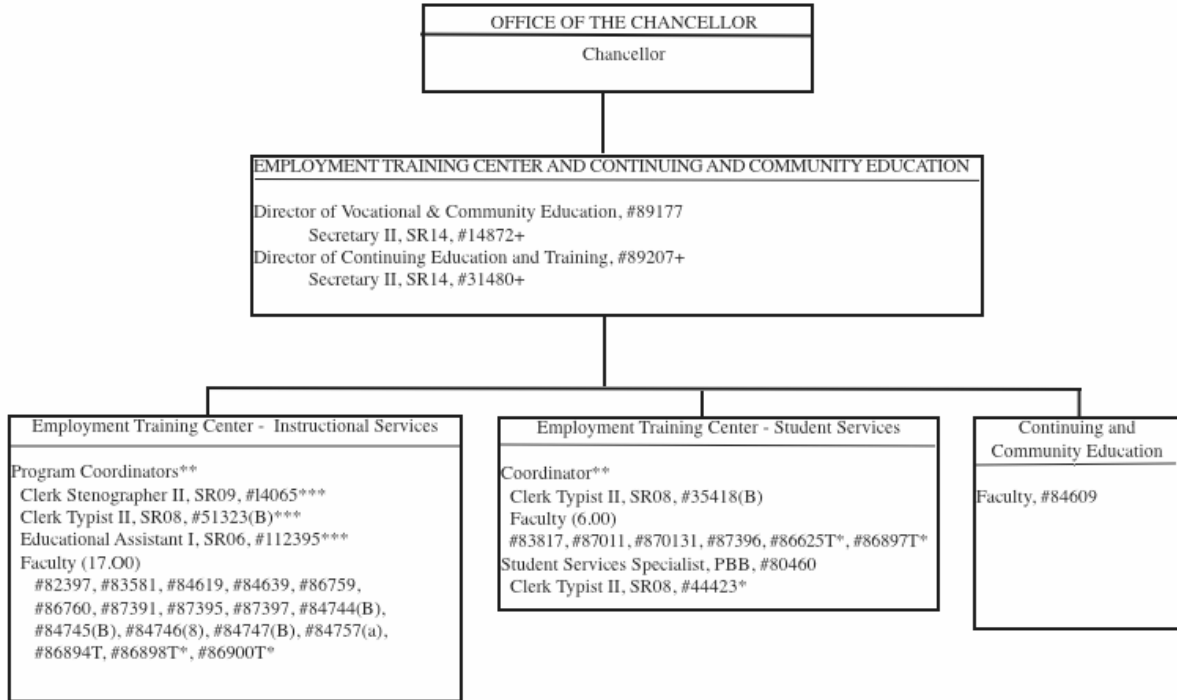
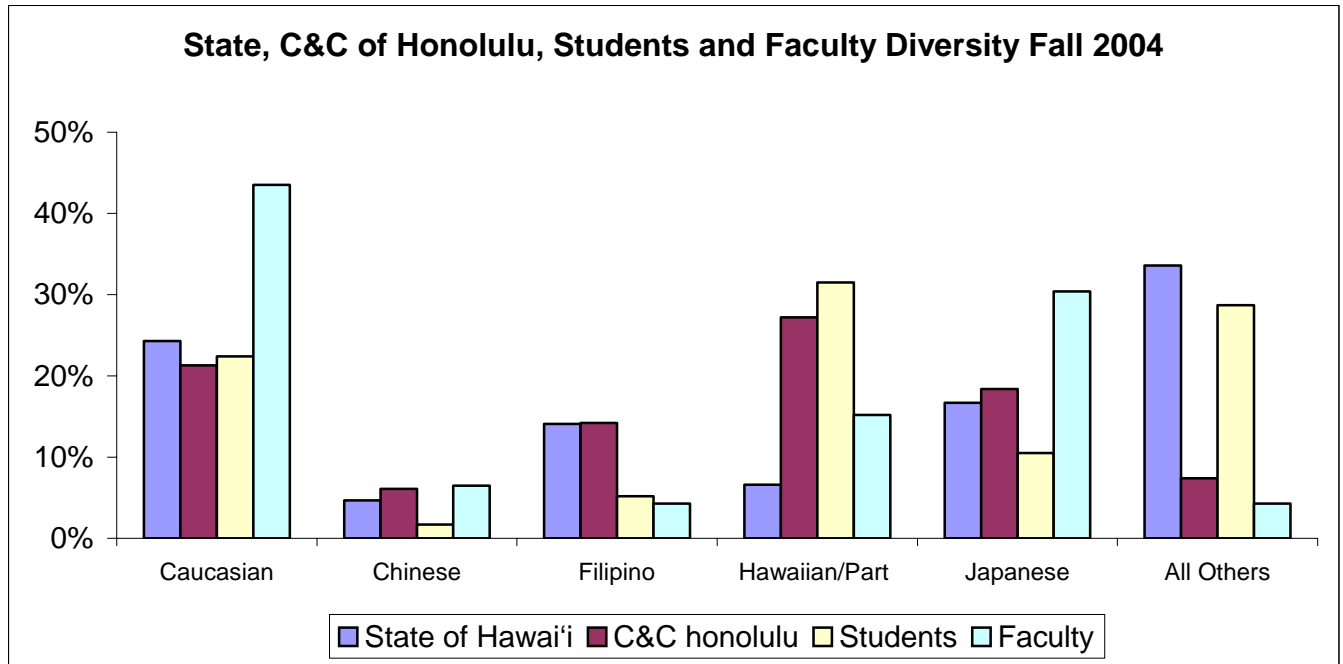


Chart VI. Employment training Center and Continuing An Community Education.



DIVERSITY

Figure 6. Diversity of State of Hawaii, City and County of Honolulu, Students, and Faculty, Fall 2004.

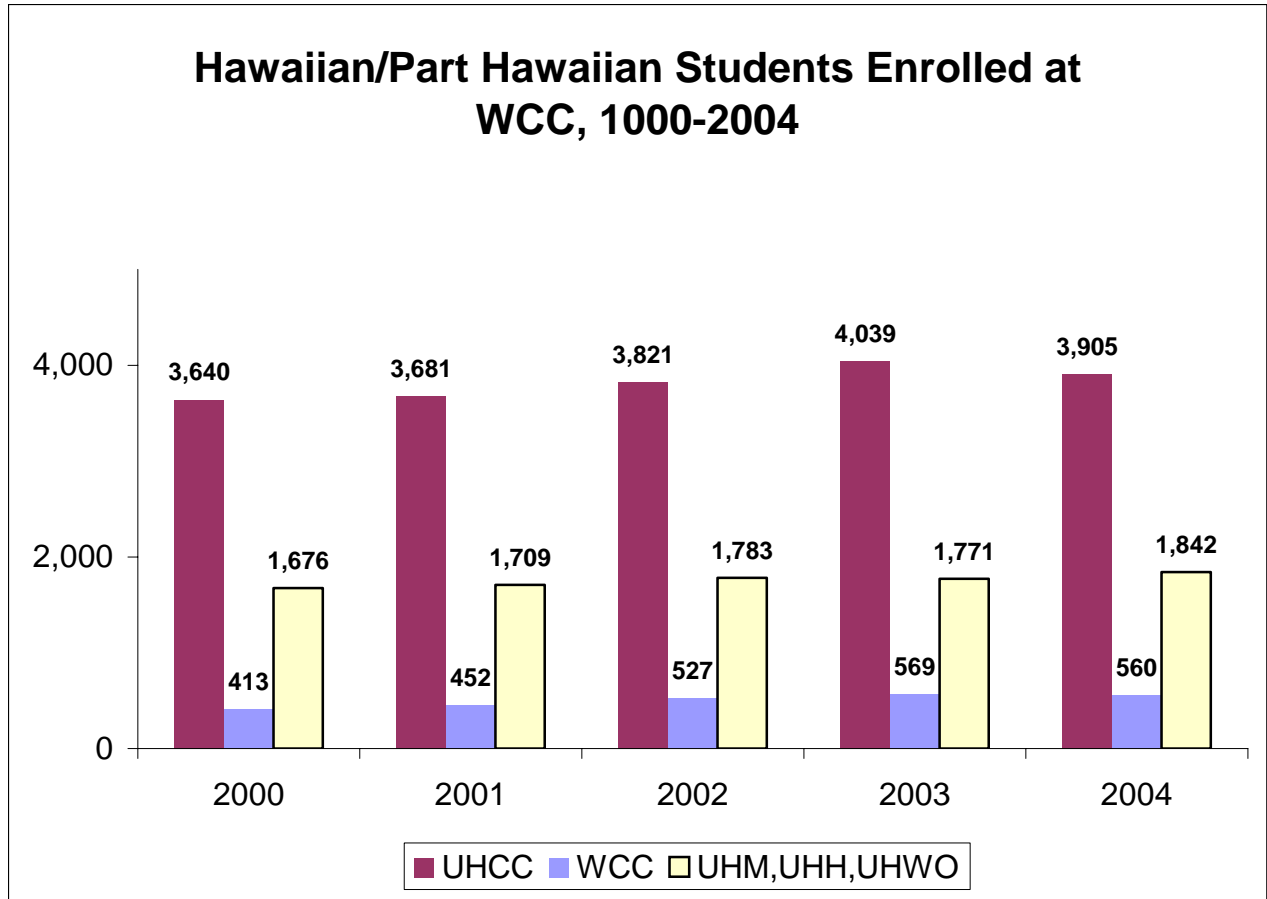


Sources:

- 1) State of Hawaii -- Population - Profile of General Demographic Characteristics: 2000, Data Set: Census 2000 Summary File 1 (SF1) 100 Percent Data; Geographic Area: Hawaii.
- 2) Students – MAPS Fall 2004 Enrollment Table 3 Selected Characteristics of Credit Students University of Hawaii Community Colleges.
- 3) Full Time Faculty – Community Colleges Human Resource Office.

HAWAIIAN AND PART HAWAI'I ENROLMENT

Figure 7. Hawaiian/Part Hawaiian Students Enrolled at Windward Community College, 2000-2004.



Source: MAPS UH-IRO Ad-Hoc Studies, Special Report: Hawaiian/Part Hawaiian Students Enrolled in the University of Hawai'i System.

Figure 8: Percentage Hawaiian/Part Hawaiian Students Enrolled UH Community Colleges

(Data to be inserted here)

EMPLOYEE PROFILE

Table 3 . Windward Community College Staff by Ethnicity and Gender Fall 2004.

	Total		Exec/Mgr		Admin, Prof & Tech		Civil Service		Instructional Faculty		Other Faculty	
	Count	%	Count	%	Count	%	Count	%	Count	%	Count	%
All Employees	151		5	3.3	35	23.2	31	20.5	70	46.4	10	6.6
Asian and Pacific Islander	69	45.7	0	0.0	11	7.3	20	13.2	34	22.5	4	2.6
Chinese	4	2.6	0	0.0	1	0.7	0	0.0	3	2.0	0	0.0
Filipino	7	4.6	0	0.0	0	0.0	3	2.0	4	2.6	0	0.0
Indian Subcontinent	2	1.3	0	0.0	2	1.3	0	0.0	0	0.0	0	0.0
Japanese	51	33.8	0	0.0	6	4.0	16	10.6	25	16.6	4	2.6
Korean	1	0.7	0	0.0	0	0.0	0	0.0	1	0.7	0	0.0
Laotian	1	0.7	0	0.0	0	0.0	0	0.0	1	0.7	0	0.0
Thai	0	0.0	0	0.0	0	0.0	0	0.0	0	0.0	0	0.0
Vietnamese	0	0.0	0	0.0	0	0.0	0	0.0	0	0.0	0	0.0
Other Asian	3	2.0	0	0.0	2	1.3	1	0.7	0	0.0	0	0.0
Hawaiian and Pacific Islander	29	19.2	1	0.7	12	7.9	8	5.3	7	4.6	1	0.7
Guam Chamorro	0	0.0	0	0.0	0	0.0	0	0.0	0	0.0	0	0.0
Hawaiian/Part Hawaiian	27	17.9	1	0.7	10	6.6	8	5.3	7	4.6	1	0.7
Micronesian	1	0.7	0	0.0	0	0.0	0	0.0	1	0.7	0	0.0
Samoan	0	0.0	0	0.0	0	0.0	0	0.0	0	0.0	0	0.0
Tongan	0	0.0	0	0.0	0	0.0	0	0.0	0	0.0	0	0.0
Other Pacific Islander	2	1.3	0	0.0	2	1.3	0	0.0	0	0.0	0	0.0
Mixed Pacific Islander	0	0.0	0	0.0	0	0.0	0	0.0	0	0.0	0	0.0
Mixed Asian Pacific Islander	0	0.0	0	0.0	0	0.0	0	0.0	0	0.0	0	0.0
Other Ethnic Groups	53	35.1	4	2.6	12	7.9	3	2.0	29	19.2	5	3.3
African American	0	0.0	0	0.0	0	0.0	0	0.0	0	0.0	0	0.0
American Indian/Alaska Native	1	0.7	0	0.0	1	0.7	0	0.0	0	0.0	0	0.0
Caucasian	49	32.5	4	2.6	11	7.3	3	2.0	26	17.2	5	3.3
Hispanic	1	0.7	0	0.0	0	0.0	0	0.0	1	0.7	0	0.0
Mixed	2	1.3	0	0.0	0	0.0	0	0.0	2	1.3	0	0.0
No Response	0	0.0	0	0.0	0	0.0	0	0.0	0	0.0	0	0.0
Gender								0.0				
Female	99	65.6	2	1.3	23	15.2	30	19.9	37	24.5	7	4.6
Male	52	34.4	3	2.0	12	7.9	1	0.7	33	21.9	3	2.0

FACULTY BY RANK, ETHNICITY, AND GENDER

**Table 4. Windward Community College Faculty by Rank, Ethnicity, and Gender
Fall 2004.**

	Total		Professor		Associate		Assistant		Instructor	
	Count	%	Count	%	Count	%	Count	%	Count	%
All Faculty	59		17	28.8	10	16.9	14	23.7	18	30.5
Asian and Pacific Islander	22	37.3	9	15.3	2	3.4	7	11.9	4	6.8
Chinese	4	6.8	1	1.7		0.0	3	5.1		0.0
Filipino	1	1.7		0.0		0.0	1	1.7		0.0
Indian Subcontinent	0	0.0		0.0		0.0		0.0		0.0
Japanese/Okinawan	17	28.8	8	13.6	2	3.4	3	5.1	4	6.8
Korean	0	0.0		0.0		0.0		0.0		0.0
Laotian	0	0.0		0.0		0.0		0.0		0.0
Thai	0	0.0		0.0		0.0		0.0		0.0
Vietnamese	0	0.0		0.0		0.0		0.0		0.0
Other Asian	0	0.0		0.0		0.0		0.0		0.0
Hawaiian and Pacific Islander	11	18.6	0	0.0	1	1.7	2	3.4	8	13.6
Guam Chamorro	0	0.0		0.0		0.0		0.0		0.0
Hawaiian/Part Hawaiian	10	16.9		0.0		0.0	2	3.4	8	13.6
Micronesian	0	0.0		0.0		0.0		0.0		0.0
Samoan	0	0.0		0.0		0.0		0.0		0.0
Tongan	0	0.0		0.0		0.0		0.0		0.0
Other Pacific Islander	1	1.7		0.0	1	1.7		0.0		0.0
Mixed Pacific Islander	0	0.0		0.0		0.0		0.0		0.0
Mixed Asian Pacific Islander	0	0.0	0	0.0	0	0.0	0	0.0	0	0.0
Other Ethnic Groups	26	44.1	8	13.6	7	11.9	5	8.5	6	10.2
African American	1	1.7		0.0		0.0		0.0	1	1.7
American Indian/Alaska Native	0	0.0		0.0		0.0		0.0		0.0
Caucasian	24	40.7	8	13.6	6	10.2	5	8.5	5	8.5
Portuguese	1	0.0		0.0	1	0.0		0.0		0.0
Hispanic	0	0.0		0.0		0.0		0.0		0.0
Mixed	0	0.0		0.0		0.0		0.0		0.0
No Response	0	0.0	0	0.0	0	0.0	0	0.0	0	0.0
Gender								0.0		
Female	31	52.5	10	16.9	3	5.1	9	15.3	9	15.3
Male	28	47.5	7	11.9	7	11.9	5	8.5	9	15.3

Source: UH Community Colleges Human Resources Office.

STUDENT PROFILE

Enrollment by Gender and Ethnicity

Table 5. Ethnicity and Gender of Students at Windward Community College, Fall 2004.

	All Students		Male		Female		No Data	
	Count	%	Count	%	Count	%	Count	%
All Students	1,775	100.00	627	35.32	1,145	64.51	3	0.17
Asian and Pacific Islander	338	19.04	120	6.76	217	12.23	1	0.06
Chinese	31	1.75	12	0.68	19	1.07		
Filipino	92	5.18	32	1.80	59	3.32	1	0.06
Indian Subcontinent								
Japanese	187	10.54	66	3.72	121	6.82		
Korean	15	0.85	5	0.28	10	0.56		
Laotian	1	0.06			1	0.06		
Thai	1	0.06	1	0.06				
Vietnamese	3	0.17	3	0.17				
Other Asian	8	0.45	1	0.06	7	0.39		
Hawaiian and Pacific Islander	643	36.23	211	11.89	432	24.34		
Guam Chamorro	6	0.34	1	0.06	5	0.28		
Hawaiian Part Hawaiian	560	31.55	185	10.42	375	21.13		
Micronesian	4	0.23	2	0.11	2	0.11		
Samoaan	27	1.52	8	0.45	19	1.07		
Tongan	14	0.79	3	0.17	11	0.62		
Other Pacific Islander	14	0.79	3	0.17	11	0.62		
Mixed Pacific Islander	18	1.01	9	0.51	9	0.51		
Mixed Asian Pacific Islander	66	3.72	29	1.63	37	2.08		
Other Ethnic Groups	728	41.01	262	14.76	448	25.24		
African American	15	0.85	3	0.17	12	0.68		
American Indian/Alaska Native	6	0.34	1	0.06	5	0.28		
Caucasian	398	22.42	153	8.62	244	13.75	1	0.06
Hispanic	37	2.08	8	0.45	29	1.63		
Mixed	255	14.37	97	5.46	158	8.90		
No Response	17	0.96	5	0.28	11	0.62	1	0.06

Source: MAPS Fall Enrollment UH, Community Colleges 2004, Appendix C7.

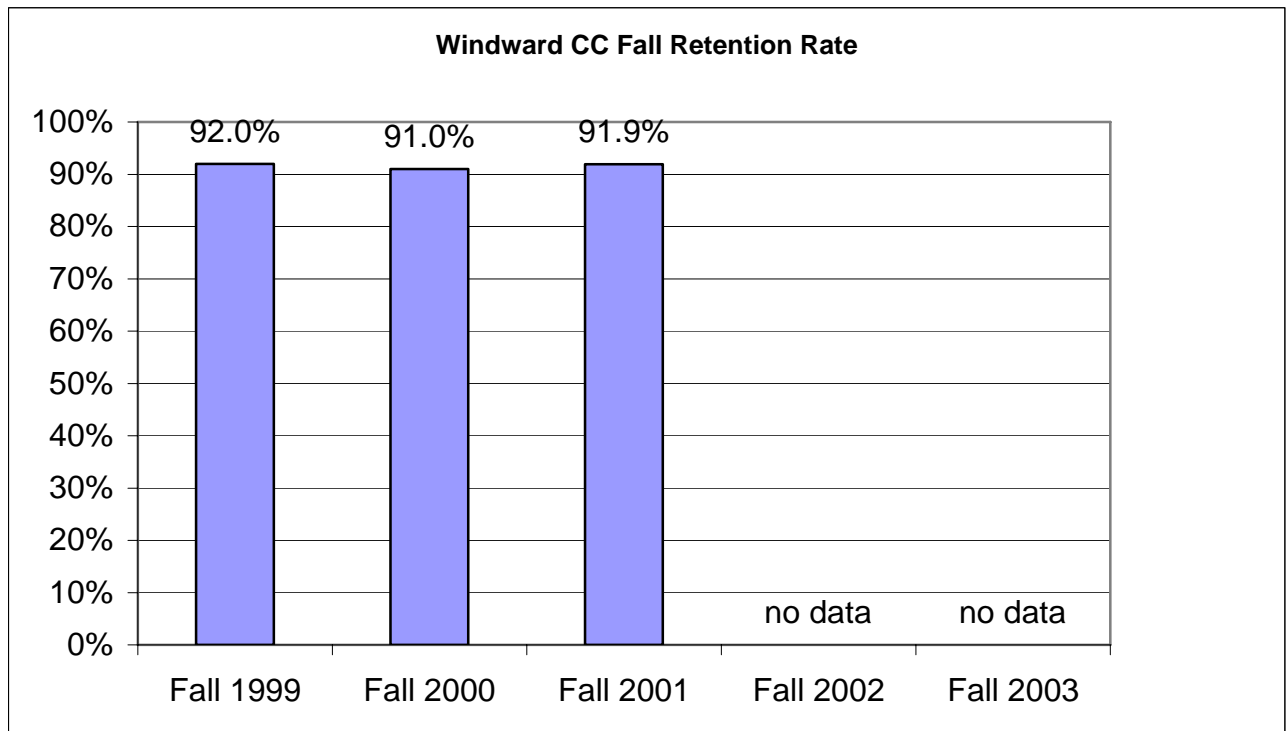
STUDENT RETENTION, PERSISTENCE, GRADUATION, AND TRANSFER

The following figures show measures of student success in meeting educational objectives and demonstrating student movement.

RETENTION

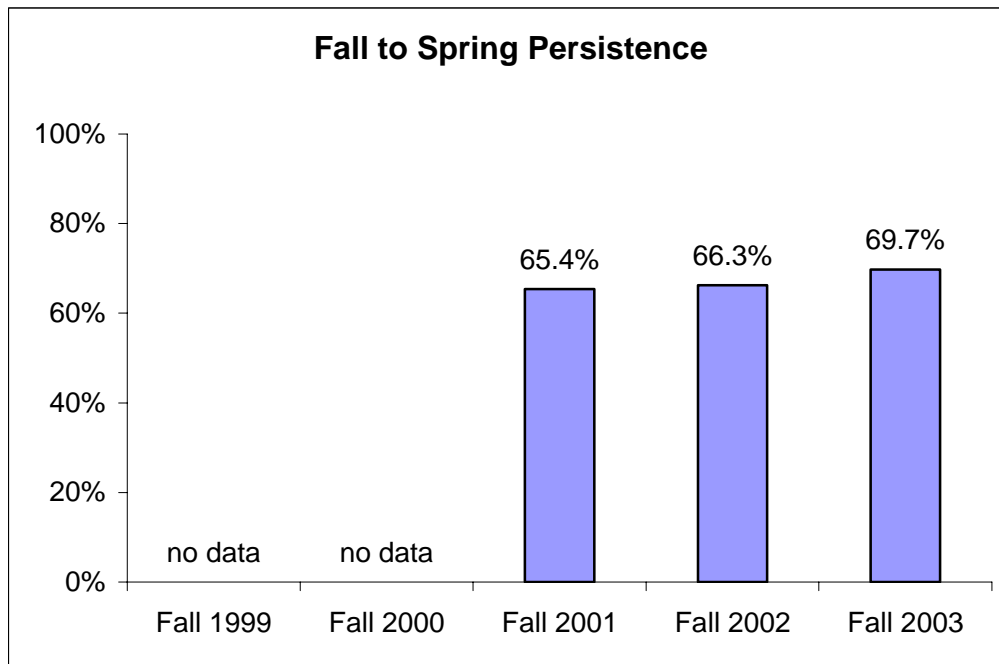
Figure 9. Fall Semester Retention for Students at Windward Community College for 1999-2003.

Retention refers to those students who are enrolled in a course at the fall census date and who do not drop before the end of the semester. (Within the University of Hawai'i Community College System, this has also been called Course Completion Rate).



Source:

Figure 10. Persistence from Fall to Spring for 1999-2003 for Windward Community College Students (1).

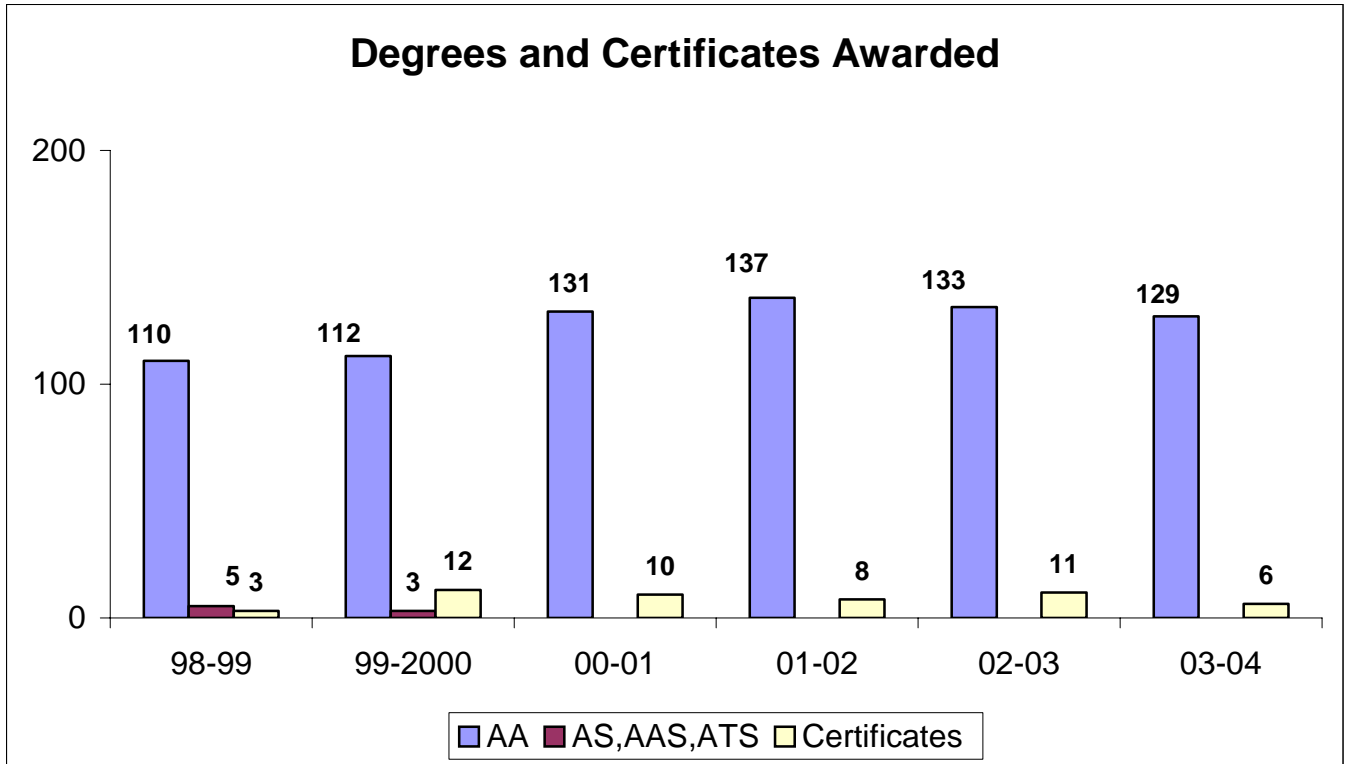


(1) Persistence refers to students who enroll in a fall course who also enroll in a course the following spring; i.e., calculated as Spr 2003 continuing students/Fall 2002 head count.

Source:

1. MAPS Fall Enrollment Reports, Table 1.
2. MAPS Spring Enrollment Reports Selected Characteristics of Credit Students, University of Hawaii, Community Colleges.

Figure 11. Annual Number of Degrees and Certificates Awarded by Windward Community College, 1999-2004.



Source: MAPS Degrees and Certificates Earned Table 2.

CONTINUING ENROLLMENT, TRANSFER, AND GRADUATION

Figure 12: Continuing Enrollment, Transfer, and Graduation of first-time, full-time, degree-seeking students within 150% of first time enrollment.

(Data to be inserted here)

TRANSFERS TO COLLEGES AND UNIVERSITIES

Table 6 presents the transfer behaviors of students whose last term of attendance was between the semesters of Fall 2001 to Fall 2003 compared against National Student Clearinghouse (NSC) data in June 2005. As some students have attended multiple colleges, the first college that a student attended was selected for this analysis.

Table 6. Transfer Numbers and Rates for Windward Community College students from Fall 2001 to Summer 2004.

Term Last Attended	Total No. of Records	Total Transfers		Transfers to UH 4-Year Institutions		Transfers to a UH Community College		Transfers to Hawaii Private Institutions (1)		Transfers to Out of State Institutions	
		N	%	N	%	N	%	N	%	N	%
Fall 2001	383	156	40.7	38	24.4	71	45.5	9	5.8	38	24.4
Fall 2002	460	178	38.7	61	34.3	70	39.3	11	6.2	36	20.2
Fall 2003	594	169	28.5	56	33.1	69	40.8	7	4.1	37	21.9
Fall 2004	614	129	21.0	49	38.0	49	38.0	8	6.2	23	17.8
Spring 2002	500	199	39.8	69	34.7	67	33.7	8	4.0	55	27.6
Spring 2003	566	214	37.8	77	36.0	60	28.0	12	5.6	65	30.4
Spring 2004	629	218	34.7	95	43.6	67	30.7	8	3.7	48	22.0
Summer 2002	84	47	56.0	25	53.2	14	29.8	1	2.1	7	14.9
Summer 2003	99	65	65.7	24	36.9	12	18.5	3	4.6	26	40.0
Summer 2004	128	58	45.3	22	37.9	14	24.1	3	5.2	19	32.8

(1) Does not include transfers to Hawaii Pacific University or Chaminade University as these colleges did not participate in the NSC during these periods.

Source:

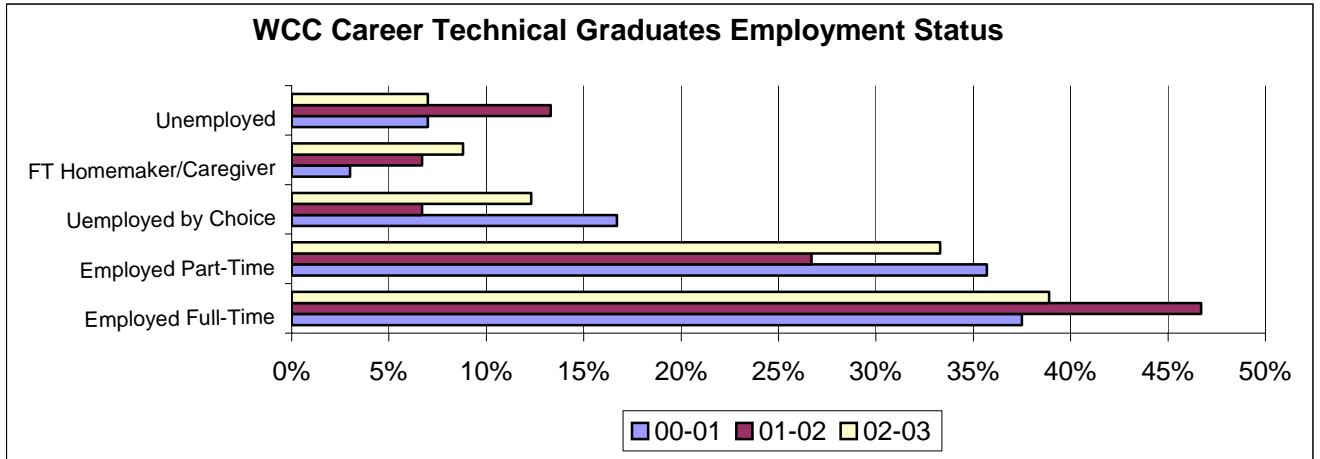
- 1) Last Term Attended derived from the Operational Data Store (ODS) Student Course View (7/19/2005).
- 2) Transfers, the National Student Clearinghouse – first institution after leaving a community college.

BASIC SKILLS COMPLETION

(Data to be inserted here)

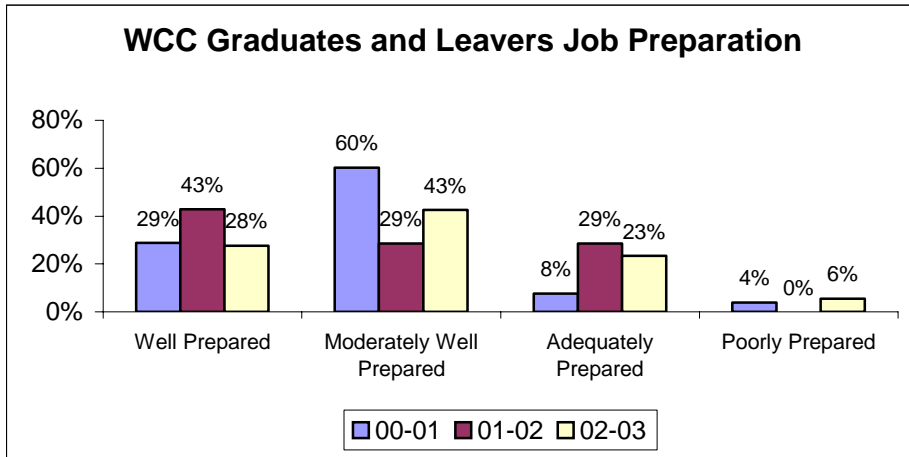
Job Placement and Preparation

Figure14. Employment Status for Career Technical Graduates at Windward Community College for 2001-2003



Source: UH Community Colleges campus Graduate and Leavers surveys.

Figure 15. Graduates and Leavers Job Preparation at Windward Community College for 2001 to 2003.



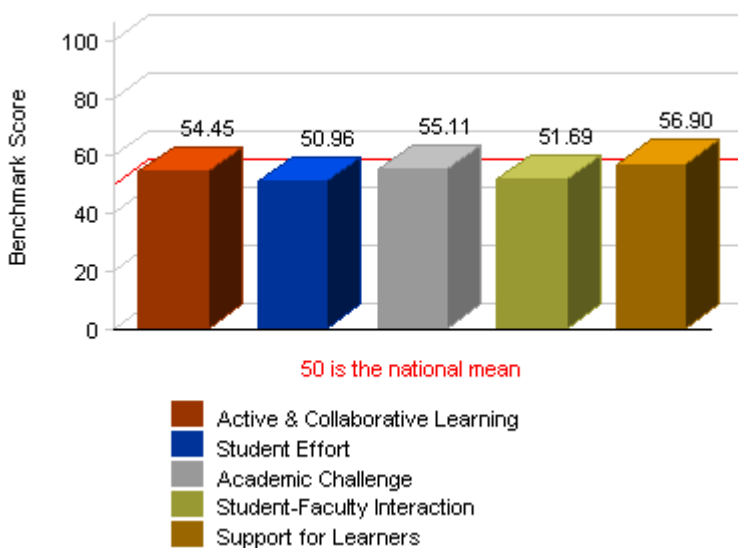
Source: UH Community Colleges campus Graduate and Leavers surveys.

STUDENT ENGAGEMENT

Research shows that the more actively engaged students are –with college faculty and staff, with other students, and with the subject matter they study – the more likely they are to learn and persist toward achieving their academic goals. Student engagement, therefore, is a valuable yardstick for assessing whether, and to what extent, an institution is employing educational practices likely to produce successful results.

University of Hawaii Community Colleges have been recognized in the national Community College Survey of Student Engagement (CCSSE) as among the highest performing colleges.

Figure 16. CCSSE Benchmark Scores for Windward Community College for 2004.



Source: CCSSE 2004 National Report.

Appendix A. Summary of Sources and Comments for Self Study DIAD Tables and Figures.

Table or Figure	Title	Source	Comments
Table 1	Enrollment	MAPS Fall Enrollment Report University of Hawaii Community Colleges, Appendix B Selected Characteristics of Credit Students	
Table 2	International	APAPA will request campus specific data from UH IRO	
Table 3	Staff	Community Colleges Human Resources Office	
Table 4	Faculty	UH Community Colleges Human Resources Office	
Table 5	Students	MAPS Fall Enrollment UH, Community Colleges 2004, Appendix C (series)	
Table 6	Transfers	National Student Clearinghouse	
Figure 1	Headcount	MAPS Fall Enrollment Report, University of Hawaii, Community Colleges Fall 2004, Table 1, Table 2	<p>need to sum "other ethnic groups"</p> <p>Use public and private June high school grads data for county (Table 3). Requires computation of Table 6 series (number enrolled) AND Table 3 annual number</p> <p>1) Campuses use one column -- campus 2) Use Table 4 campus data</p> <p>Campuses use 4 columns -- State, County, Students, Faculty, Figure 6 For "State of Hawai'i" Bar: Use County Census Data from the following html http://www.hawaii.gov/dbedt/census2k/hcdc-sf1.html</p> <p>Campuses use three columns -- UHM, UHH, UHWO/UHCC/Campus</p>
Figure 2	Enrollment	MAPS Enrollment Projections University of Hawaii Community Colleges Fall 2005 To Fall 2011, Table 4, Middle Projection Series	
Figure 3	Going Rate %	Hawaii: MAPS, High School Background of First-Time Students, Table 3 and Table 6 (series) Nation: National Center for Education Statistics 2005 Table 20-2 Immediate Transition to College	
Figure 4	Going Rate #	MAPS, High School Background of First-Time Students, Table 4	
Figure 5	Org Chart	University Hawaii Community College System Organizational Charts	
Figure 6	Diversity	1) State of Hawaii --Population - Profile of General Demographic Characteristics: 2000, Data Set: Census 2000 Summary File 1 (SF1) 100 Percent Data; Geographic Area: Hawaii 2) Students – MAPS Fall 2004 Enrollment Table 3 Selected Characteristics of Credit Students University of Hawaii Community Colleges 3) Full Time Faculty – Community Colleges Human Resource Office	
Figure 7	HI/Part #	MAPS UH-IRO Ad-Hoc Studies, Special Report: Hawaiian/Part Hawaiian Students Enrolled in the University of Hawai'i System	

			Note: UHCC chart number = UHCC total minus campus number
Figure 8	HI/Part %	MAPS UH-IRO Ad-Hoc Studies, Special Report: Hawaiian/Part Hawaiian Students Enrolled in the University of Hawai'i System	
Figure 9	Retention	MAPS Distribution of Grades, Credits Earned Ratios, Course Completion Ratios and Current Grade Point Ratios, Table 4 (Note: Most recent report fall 2001)	Need 2529 course completion rates calculation of missing data formula: <u>N = # grades earned at end of semester</u> D= # students at census date census date = 5th Friday after start of term
Figure 10	Persistence	1) MAPS Fall Enrollment Report – Table 1 2) MAPS Spring Enrollment Report Selected Characteristics	Requires calculation -- MAPS Fall Enrollment Report -- Headcount MAPS Spring Enrollment Report -- Selected Characteristics - continuing reg status calculation data formula: <u>N = continuing from Table 7 (i.e., SPR 2003</u> D = Table 1 enrollment (i.e., Fall 2002)
Figure 11	Degrees	1) MAPS Degrees and Certificates Earned Table 2 (series) Note: Certificate data only includes Certificates of Atonement (CA) Certificate of Completion/Competency and Academic Subject Certificates not included.	Certificate calculation instructions included with data cd provided by UHCC system office
Figure 12	Continuing Enrollment	1) Numbers are unduplicated 2) Graduation – first time, full time students who received a degree or certificate within 150% of time from first time enrollment 3) Transfer – first time, full-time students who transfer (as matched by National Student Clearinghouse data) another postsecondary institution within 150% of time from first time enrollment 4) Continuing – first time, full time students who are still enrolled at the same institution within 150% of time from first time enrollment and who have not received a degree or certificate 5) Transfer-Out Information available beginning fall 2000 cohort	
Figure 13	Basic Skills	Banner—Operational Data Store (ODS) Capture 08/__/2005	Use Access database provided. Use 2005 as the year
Figure 14	Employment	UH Community Colleges campus Graduate and Leavers surveys	

Figure 15	Job Prep.	UH Community Colleges campus Graduate and Leavers surveys	
Figure 16	CCSSE	CCSSE 2004 National Report	